

NIGHTWATCHER

MOTION TRACKING SENSOR HALOGEN LIGHT

INSTALLATION & OPERATING MANUAL



**NIGHTWATCHER SURVEILLANCE PLUS
WIRELESS USB RECEIVER
MODEL NO: NW1002X**

INTRODUCTION

Congratulations on the purchase of your new Nightwatcher Security Light. Before installation of the unit, please read the operating instructions and safeguards carefully. It is important that you read and follow the instructions in the manual, even if you feel you are familiar with this type of product.

SPECIFICATIONS

Model Number:	NW1002x
AC Input:	220-240V 50Hz
Time Adjustment:	30 / 60 Seconds
Sensor Range:	10m x 210°
Power Consumption:	150Watts
IP Weather Rating:	IP54
Lamp:	150, J type Halogen Lamp
Camera:	Color CMOS image sensor View angle 60° Transmission frequency: ISM 2.4GHz ARIB-T66
Sensitivity Adjustment:	5m / 10m
Operation Temperature:	0°~ + 50°

IMPORTANT SAFEGUARDS

WHEN USING ELECTRICAL APPLIANCES, IN ORDER TO REDUCE THE RISK OF FIRE, ELECTRIC SHOCK, AND/OR INJURY, THESE BASIC SAFETY PRECAUTIONS SHOULD ALWAYS BE FOLLOWED:

FOR YOUR SAFETY

Read all instructions carefully, even if you feel you are quite familiar with the appliance.

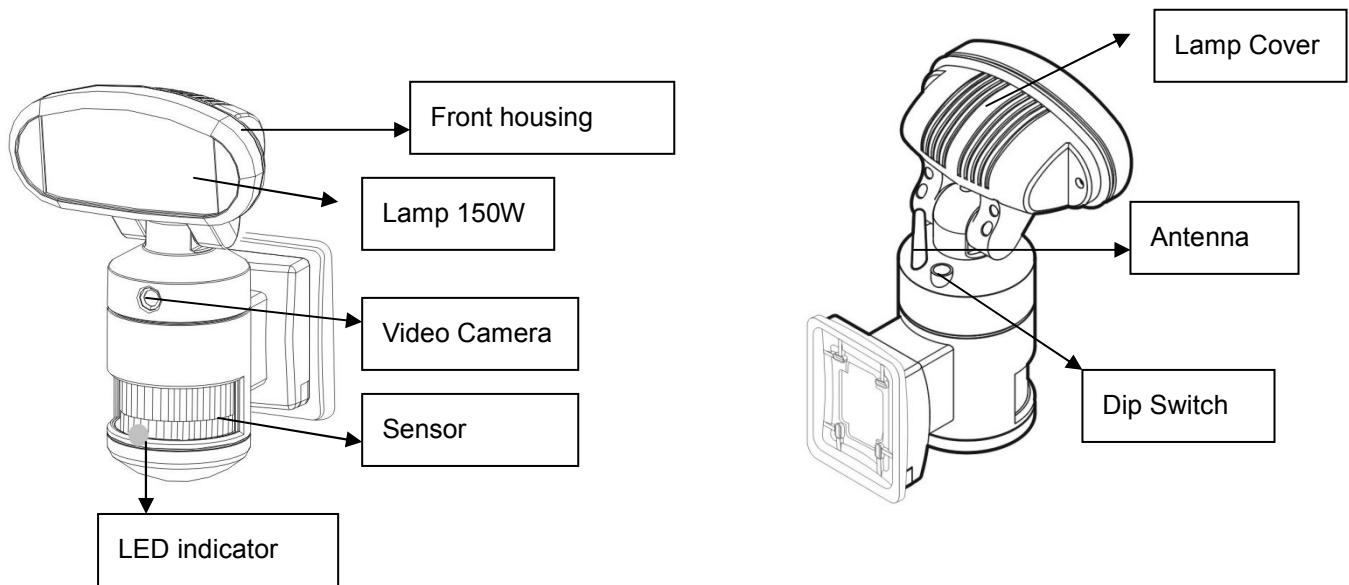
- Any alterations or additions to building wiring, must be completed by a licensed electrical mechanic, or person authorised by legislation to work on the fixed wiring of any electrical installation
- To prevent electric shock, please ensure that power is disconnected before installing.
- The appliance is not intended for use by children or infirm persons without supervision.
- Children should be supervised to ensure that they do not play with the appliance.
- This unit must be connected to a 220-240V 50Hz power source
- The lamp must be earthed
- The cable installed shall be 3 x 1.0mm² at least
- The unit is for outdoor use only
- The unit is for wall mounting

COMPULSORY WARNING

Note: No user serviceable parts inside. The Halogen Lamp is the only part that can be replaced. Unauthorised modification voids warranty, Return to place of purchase for replacement or service under warranty.

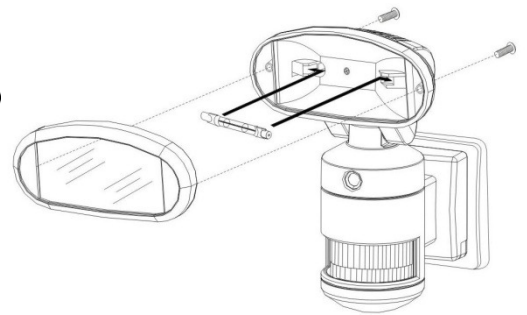
SAVE THESE INSTRUCTIONS

OVERVIEW



INSTALLING THE BULB

- Unscrew the lamp cover of the fitting and install a 150W J-ty
- Re-fit the lamp cover and tighten the screws.



IMPORTANT: THE INTALLATION OF THIS FITTING MUST BE DONE BY A QUALIFIED ELECTRICIAN.

- This fitting must be earthed.
- Do not mount the light against near flammable surfaces.
- The motion detector will not operate correctly if it is installed:
 - (□) Near the outlet of a central heating boiler
 - (□) Near air conditioning plant
 - (□) Pointing directly at moving vehicles
 - (□) Within sight of reflection from moving water
 - (□) Where other lamps could shine onto the detector
- The maximum rating of this light is 150 Watts. Check that the total load of the circuit. Including this luminaire. Does not exceed the rating of the circuit cable.

WARNING !!!

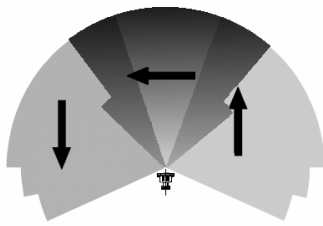
BEFORE ATTEMPTING ANY INSTALLATION OR MAINTENANCE, ENSURE THAT THE ELECTRICAL SUPPLY IS SWITCHED OFF AND THE CIRCUIT FUSES REMOVED OR THE CIRCUIT BREAKER IS IN THE "OFF" POSITION.

NOTE: This highly responsive unit may occasionally activate due to rapid environmental changes. Allow for approximately 30 seconds warm-up time before the sensor resumes normal activity.

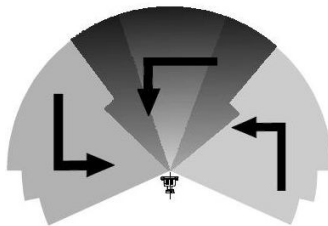
MOUNTING THE FITTING

To ensure correct operation of the sensor, mount the fitting where traffic passes across the detector.

TOP VIEW



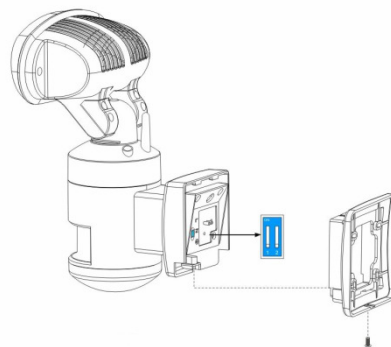
GOOD SENSITIVITY



LESS SENSITIVITY

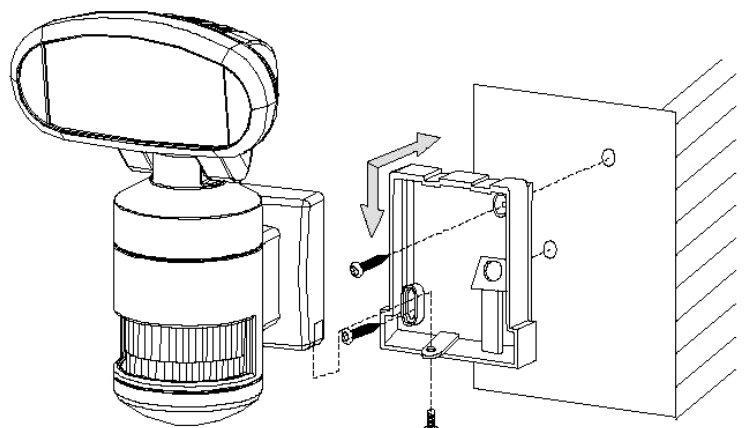
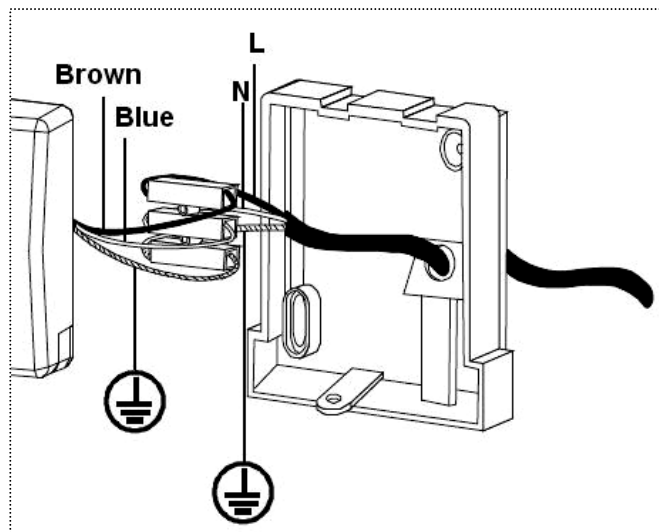
SETTING THE LIGHT UP TIME & SENSITIVITY

- Remove the back mounting box from the fixture by unscrewing the screw at the bottom.
- Set the Light up time & Sensitivity you
 - 1 : Light up time (OFF : 30 seconds / ON :
 - 2 : Sensitivity (OFF : 5m / ON : 10m)
- Re-fit the back mounting box and tighten the screw.



WIRING INSTRUCTIONS

- Feed the cable through the back mounting box and bush the cable entry to avoid abrasion to the cable.
- Connect the earth wire to the connector opposite the green/yellow cable.
- Connect the brown phase conductor active to the connector opposite the brown cable and tighten the screws.
- Connect the blue neutral conductor to the connector opposite the blue cable and tighten the screws.
- Check that all connections are correct and tight,
- Re-fit the fitting to the back mounting box.

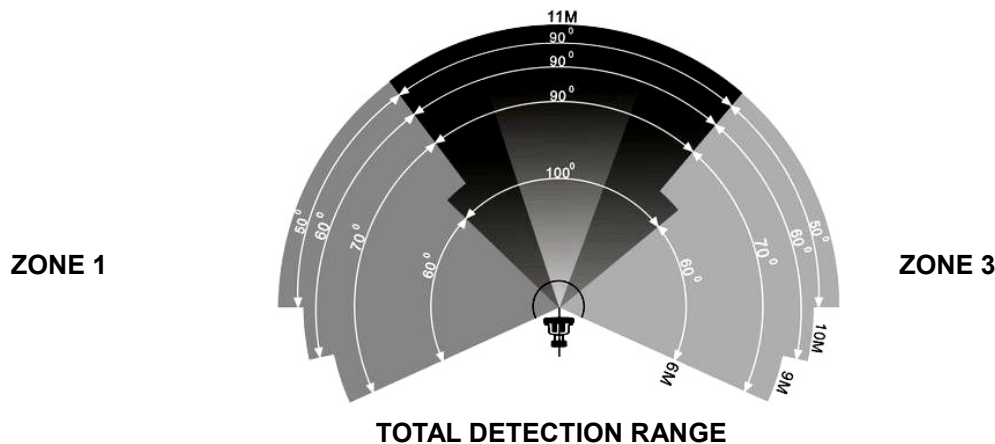


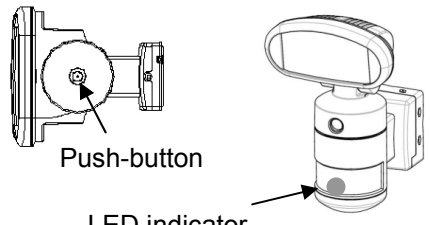
FUNCTION

This light is equipped with 3 motion sensors: zone 1 covers 60 degree; zone 2 covers 100 degrees and zone 3 covers 60 degrees.

ZONE 2

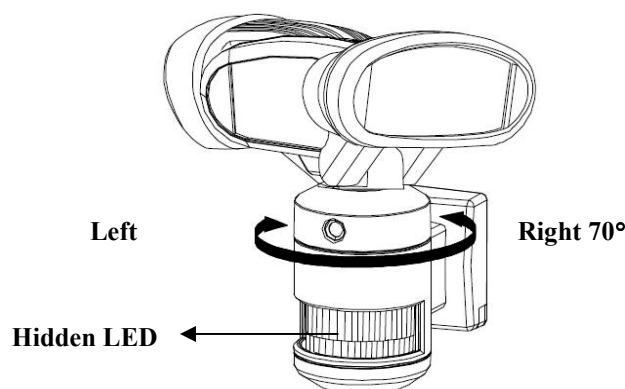
220 degrees (maximum) in total for 3 zones.



- The light will switch on for 30 /60 seconds and off automatically when heat/ movement is detected.
 - The factory default: the mode is 「Auto mode」 for night time operation, camera works all day.
 - To change the mode to night time only (Auto mode), push the button at the bottom of the housing and the hidden LED indicator will turn off at this mode. The light will be on at 30 /60 seconds when detecting any movement at night.
 - Push-button for programmable functions:
 - **Test mode:** light and camera work all day
 - **Auto mode:** light works at night, camera works all day
- 

Push-button

LED indicator
- Reset function: If the stepper motor of tracking light works abnormally, the hidden LED indicator will flash red and the light will stop turning automatically. In Test mode, the red LED will flash for 3 times and off for 5 seconds; in "Normal mode", the red light will flash in a regular pattern. Please simply switch off and on the main power to resume the tracking light. Below are the possible abnormal situations.
 - External force: the light head is blocked by objects or is blown by strong wind and is unable to turn properly, the hidden LED will flash in red to signal users the abnormal situation.
 - Stepper motor: when the stepper motor has reached the end of its life time or is damaged, the hidden LED will flash in red to signal users the abnormal situation. Please switch off and on the main power, the tracking light now may or may not resume its operation. If the stepper motor stops working, NW Surveillance Plus becomes a regular motion sensor security light.



OPERATION

1. Insert the plug to activate the light, the light is now under Test mode: light works on day and night

NOTE: Allow for approximately 30 seconds warm-up time before the sensor resumes normal activity.

2. To test, walk through the sensor's detection area.

3. Movement will activate the sensor and turn the light on; the light will turn to the detected zone automatically.

4. After the light is activated, **keep out of the detection area** and the light will switch off automatically after light up time (30/60 seconds). The light will be activated again when detecting any movement.

If there is continuing movement in the detection zone, the light will stay on until movement ceases. (After light up time)

LAMP REPLACEMENT

To isolate the unit, first switch off the unit from the mains power. Allow bulb to cool before attempting to remove it. Unscrew the lamp cover and take the old lamp out and replace with a new one, close the lamp cover and tighten the screws.

WARNING: This fitting will become hot when in use. Allow bulb to cool before touching.

CLEANING

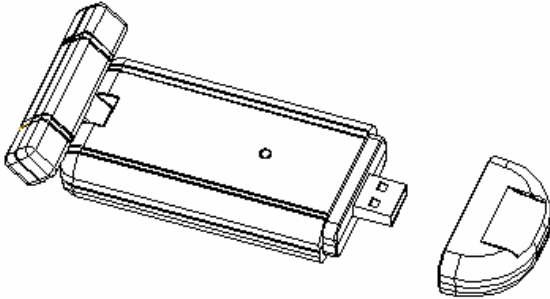
- Before Cleaning make sure that the power is cut off and allow to cool before commencing.
- Care must be taken while cleaning to avoid scratching the fitting and glass. A soft cloth or a fine hair brush should be used with a non-abrasive cleaner.

DO NOT use solvents or abrasive cleaners on any part of the Nightwatcher.

<p>NOTE: THE INTELLIGENT MOTION SENSOR TRACKING LIGHT IS DESIGNED TO ILLUMINATE WHEN THE DETECTION AREA IS ENTERED BY A PERSON AND WILL DETECT A MOVING HEAT SOURCE. THERE IS NO GUARANTEE IMPLIED THAT IT WILL PROVIDE TOTAL SECURITY OR PREVENT ILLEGAL ENTRY.</p>

NIGHTWATCHER SURVEILLANCE PLUS WIRELESS USB RECEIVER

I. OVERVIEW OF NW SURVEILLANCE PLUS WIRELESS USB RECEIVER



II. INSTALLING NIGHT GUARD DRIVER ON YOUR COMPUTER

- Install Night Guard Driver into your computer. Choose the software you use for your computer.
- Follow the instructions on the installation screen
 - Click **Setup_Aurum_091021.exe** (fig 1) → **Next** (Fig. 2) → **Next** (Fig. 3) → **Install** (Fig. 4) → **Next** (Fig. 5) → **Install this driver software anyway** (Fig. 6) → **Finish** (Fig. 7) → **Finish** (Fig. 8) → Restart windows.
 - If your computer doesn't run the installation program automatically, please click the "Start" button and choose "Run." Then browse your computer to find CD slot and Driver and click "Setup".

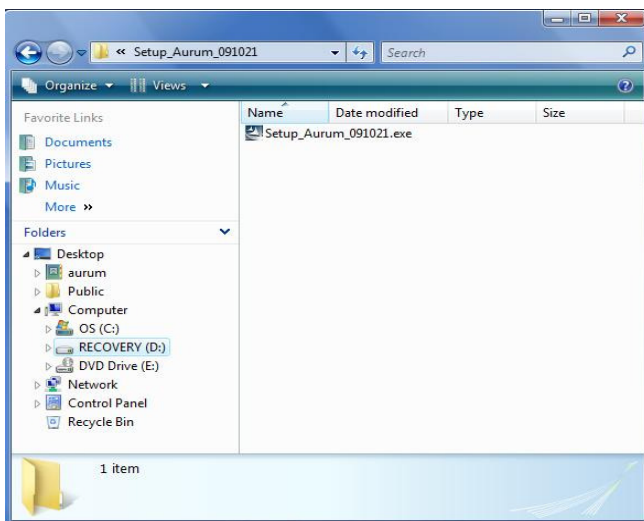


Fig. 1

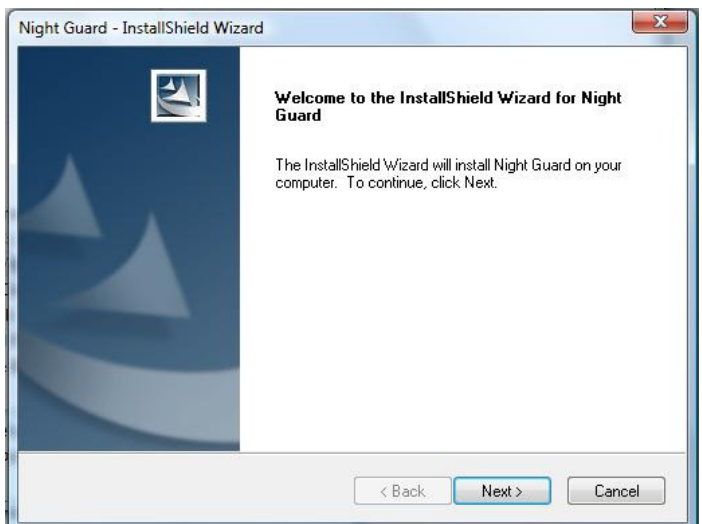


Fig. 2

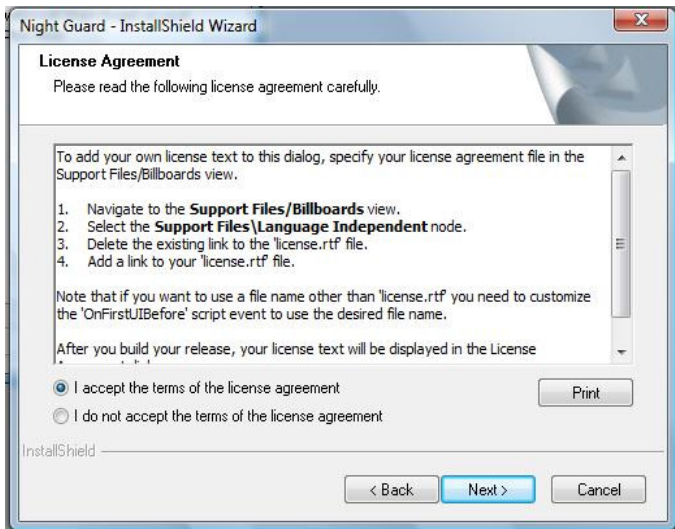


Fig. 3

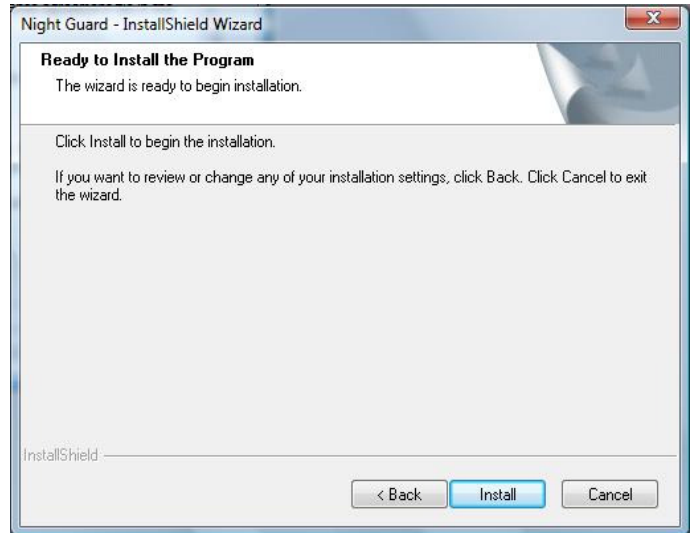


Fig. 4

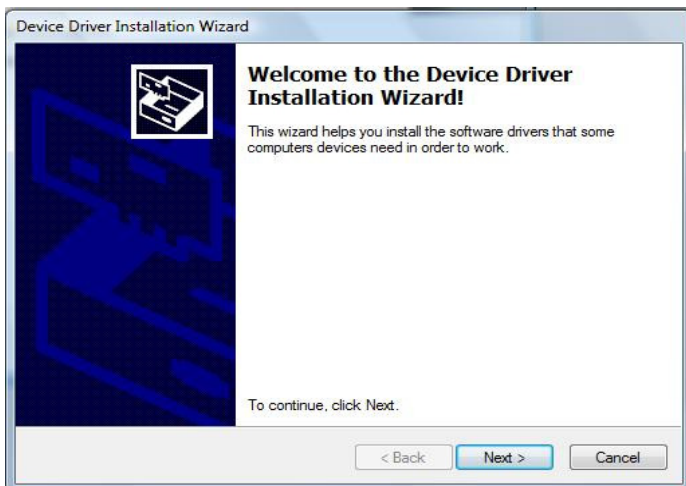


Fig. 5

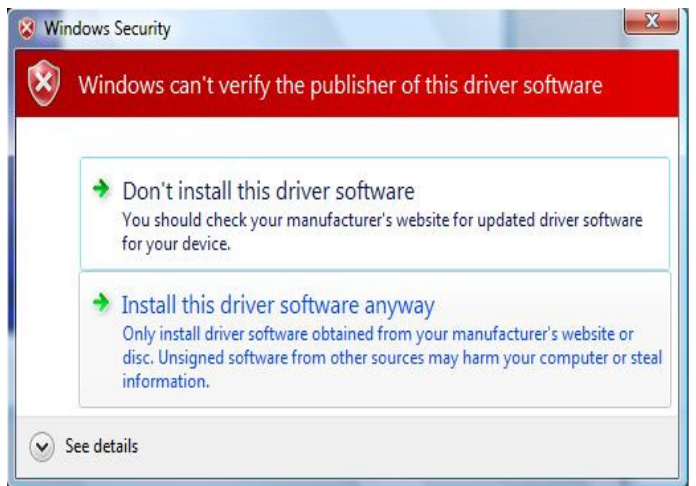


Fig. 6



Fig. 7

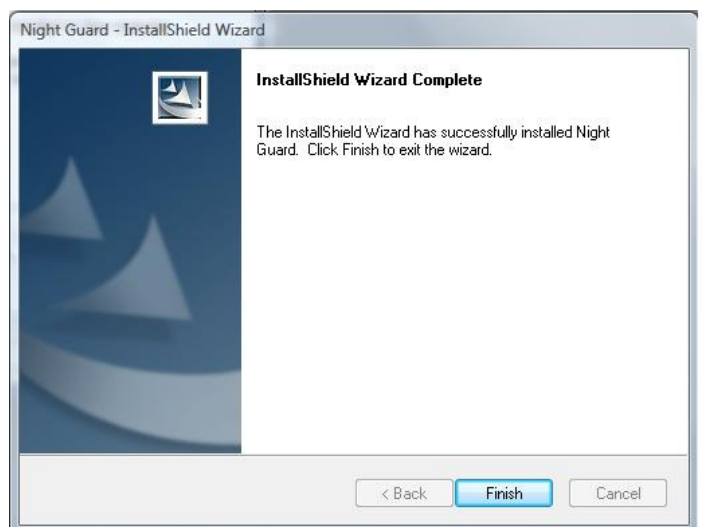
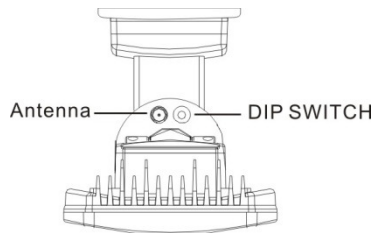


Fig. 8

III. INSTALLING NIGHTWATCHER SURVEILLANCE PLUS

- Assembly and power on the NW2002. Please refer the instruction of NW2002.
- Set up the channel of receiver same as the fitting of NW2002 : Plug 752C into a USB port on your PC , 10 seconds later to click Night Guard as show on the screen. Click the Night Guard (Fig. 12) → **Setup** (Fig. 13) → **Device Setup** (Fig. 14) → Choice the number of channel you want **CH1~ CH4** (Fig. 15) → **press Dip Switch button of 9331C-SP8** and when the video is shown on the screen, this channel setup is completed (Fig. 16) → then click **OK** (Fig. 17) .



NW2002

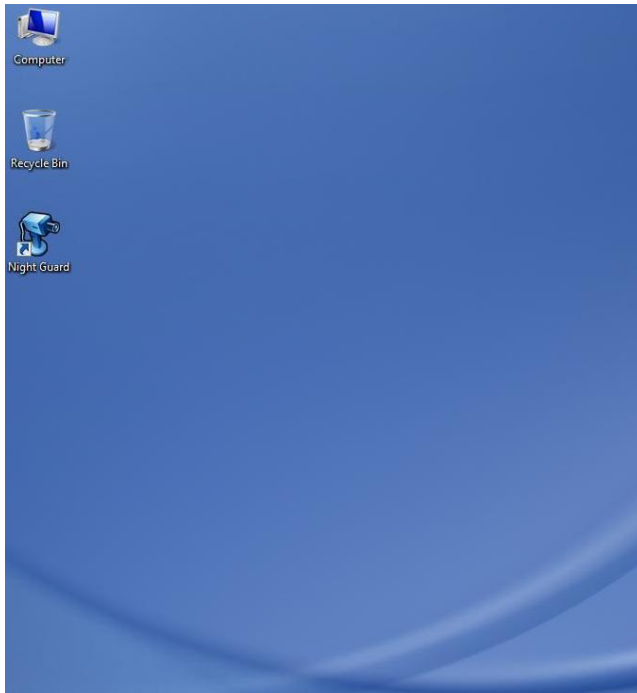


Fig. 12

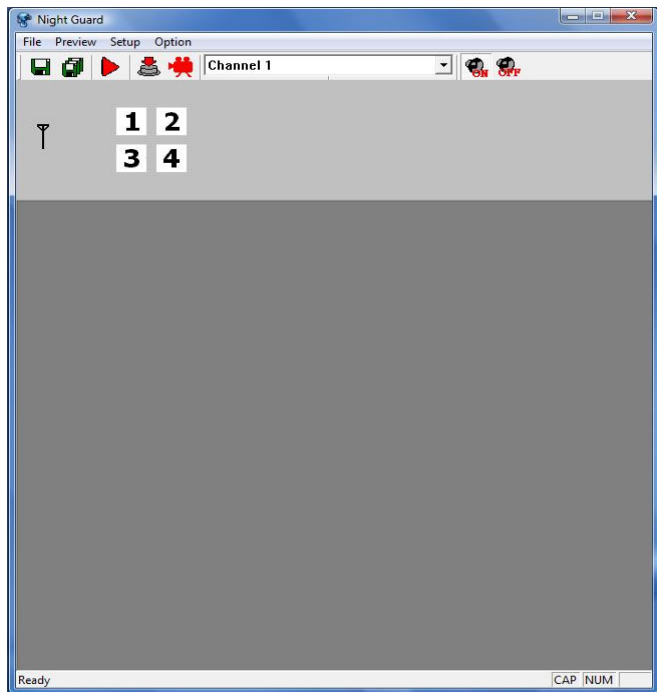


Fig. 13

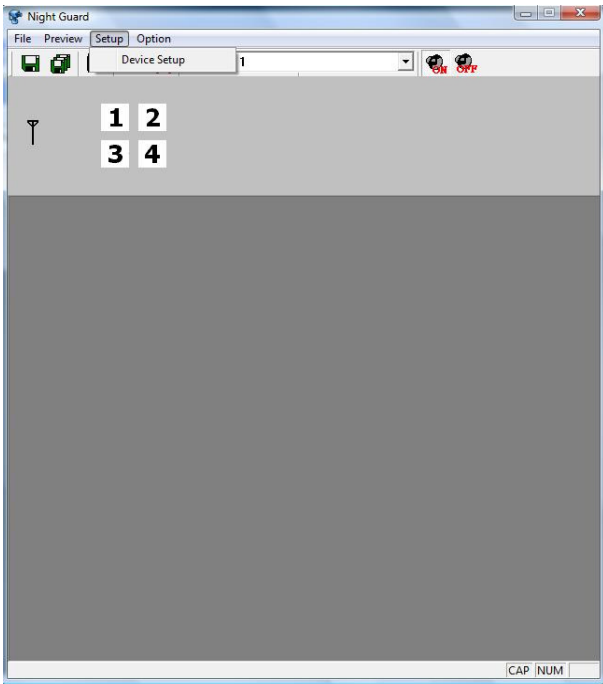


Fig. 14

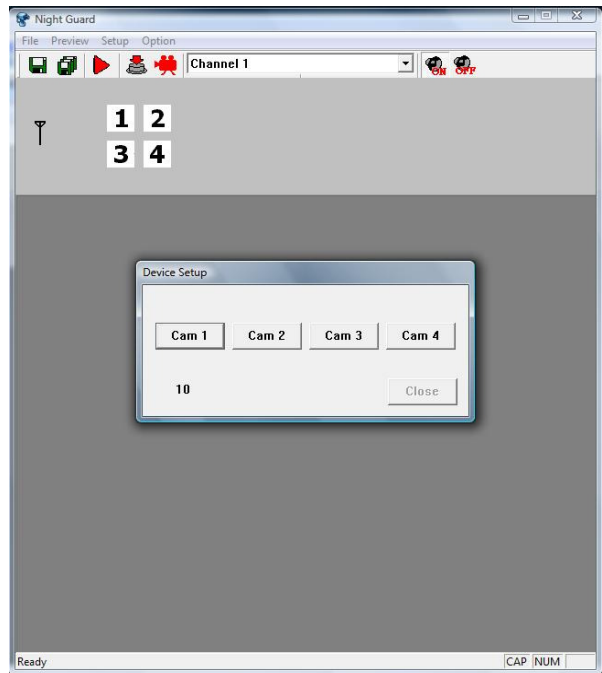


Fig. 15

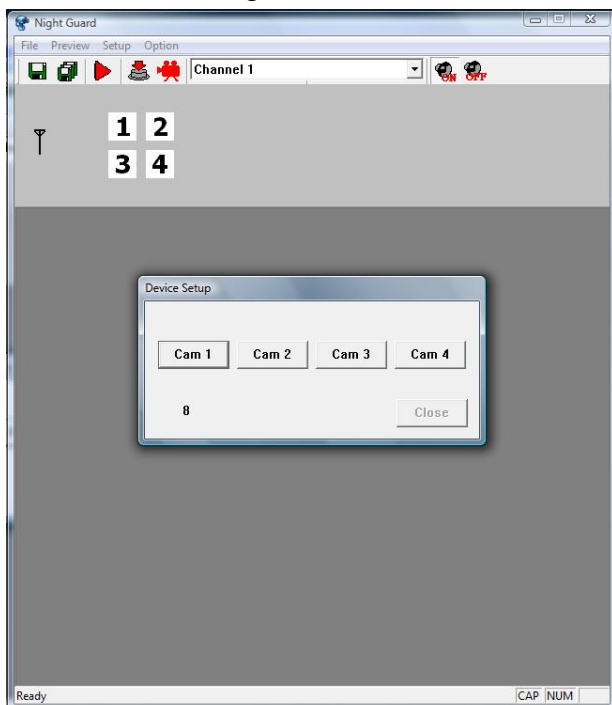


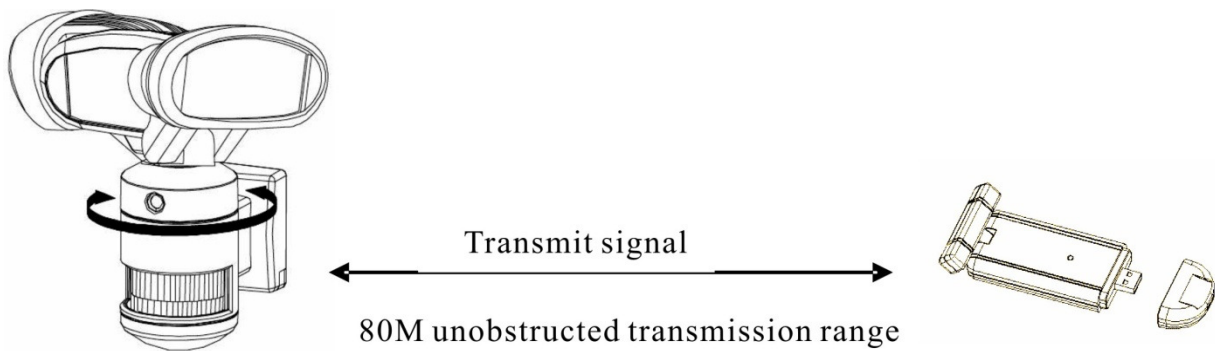
Fig. 16



Fig. 17

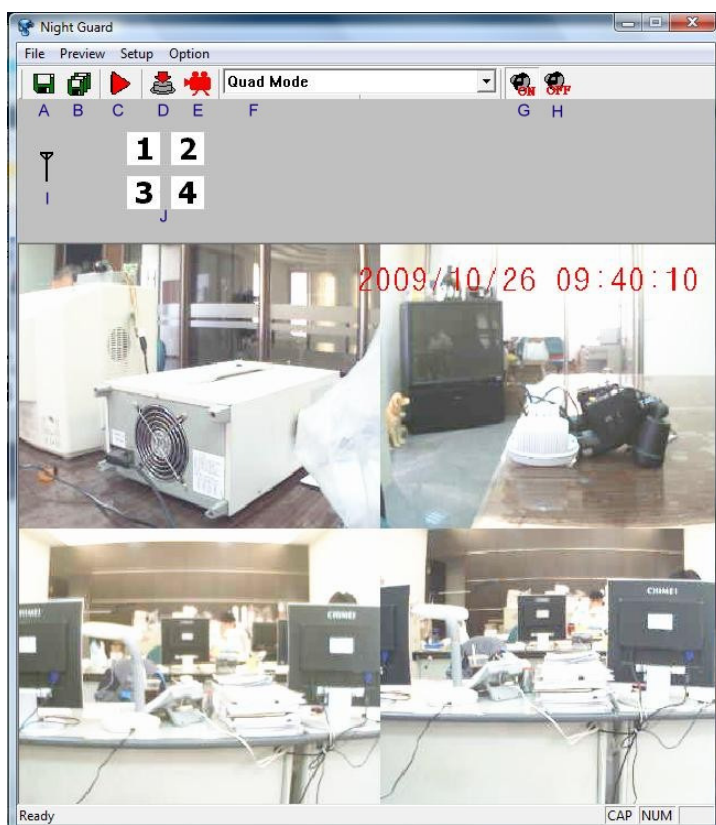
IV. OPERATION

When NW Surveillance Plus detects any movement, it will send the digital wireless signal to 752C and the detection image will be shown on your computer at the same time depending on your have installed 752C into your computer and open the Night Guard software. The unobstructed transmission effective range is about 80 meters, but actual transmission range may vary according to weather, location, interference and building. This USB wireless receiver can receive 4 camera images.



V Definition of Nightwatcher Driver 752C

- File : Save mode
 - A : Single file save
 - B : Multi files save
- Preview : Shooting / Recording mode
 - C : Auto recording
 - D : Manual recording - Capture Photo
 - E : Manual recording - Recording video
- Setup : Channel Column
- Channel 1 : Set up Channel
 - F : It can select Channel 1~4 of Single view or 4 quad view
- Alarm
 - G / H : Alarm ON / OFF
 - J : When TX detected, one of channel 1~ 4 will turn to Red background.
- Signal Intensity Display
 - I : RX and TX of transmission signal.



PRODUCT WARRANTY

1 YEAR REPLACEMENT WARRANTY

Your Nightwatcher Security Light is covered for a
Period of 12 months from your

Date of Purchase.

The Warranty covers faulty parts or workmanship.

**The warranty is only made available by returning
the product to your point of purchase with your
receipt.**

PURCHASED FROM:

DATE OF PURCHASE:

PRODUCT SERIAL #:

**THIS WARRANTY FORM SHOULD BE RETAINED
BY THE CUSTOMER AT ALL TIMES.**

WARNING

**The following actions will result in the warranty
being void:**

- If the product has been operated on a supply voltage other than that specified on the unit
- If the product shows signs of damage or defects caused by or resulting from abuse.
- If the product has been disassembled or tampered with in any way.
- If the product is not drilled, mounted and used in accordance with the instructions.
-

Note: Warranty excludes consumable parts such as tubes, globes and batteries.

**YOUR WARRANTY FORM SHOULD BE RETAINED BY YOU AT ALL TIMES.
SHOULD YOU HAVE ANY QUESTIONS PRIOR TO RETURNING YOUR PRODUCT
FOR WARRANTY OR REPAIR PLEASE TELEPHONE OUR CUSTOMER SERVICE
HELPLINE:**

CUSTOMER SERVICE: 1300 281 005

TO ENSURE A QUICK RESPONSE PLEASE HAVE THE MODEL NUMBER, SERIAL
NUMBER AND DATE OF PURCHASE AVAILABLE. A CUSTOMER SERVICE
REPRESENTATIVE WILL TAKE YOUR CALL AND ANSWER ANY QUESTIONS YOU MAY
HAVE RELATING TO THE WARRANTY POLICY OR PROCEDURE.



NEWLITE PTY LTD

E6, 2A Westall Road, Clayton,

Victoria, Australia, 3168

Phone: 1300 281 005

Fax: 03 8610 0393

Email: info@newlitecorp.com.au

Web: www.newlitecorp.com.au